



Kernel SQL Server Password Recovery

“Make Password Protected MDF Files Accessible
Once Again”

PRODUCT GUIDE

Table of Contents

1.	Introduction to Kernel SQL Password Recovery.....	4
1.1	Using this Manual.....	4
1.2	About Kernel SQL Password Recovery.....	5
1.4	Who Should Use this Software?.....	5
2.	Getting Started.....	6
2.1	Installation Pre-requisites.....	6
2.2	Downloading Kernel SQL Password Recovery for the First Time.....	7
2.3	Install Kernel SQL Password Recovery.....	7
2.4	Start Kernel SQL Password Recovery.....	7
2.5	Uninstall Kernel SQL Password Recovery.....	7
3.	Software Interface.....	9
3.1	Tool Bar.....	9
3.2	Buttons Used.....	9
4.	Recovering MDF File Password.....	11
5.	Full Version.....	13
5.1	Requirement of Full Version.....	13
5.2	Purchasing Full Version.....	13
6.	Support.....	14
7.	Troubleshooting.....	15
7.1	Common Issues.....	15
8.	Legal Notices.....	16
8.1	Copyright.....	16
8.2	Trademark.....	16
8.3	Disclaimer.....	16
8.4	License Agreement.....	16

Table of Figures

Figure 4.1: Main Window 11

Figure 4.2: Open window..... 11

Figure 4.3: List of all MDF files 12

Figure 4.4: Password Recovered..... 12

1. Introduction to Kernel SQL Password Recovery

Welcome to the user guide for Kernel SQL Password Recovery, the most effective and convenient password recovery software to recover password of SQL Server databases files. This user manual provides the step by step procedure of password recovery with Kernel SQL Password Recovery.

1.1 Using this Manual

This user manual is intended to guide users on using Kernel SQL Password Recovery. We suggest that first time users should read this user manual completely and carefully before proceeding to use the software. However an experienced can use the table of contents to find out information related to the tasks that you need to perform with Kernel SQL Password Recovery.

You can use the table of contents to navigate through different sections of this user manual. The table of contents lists all the sections that are contained in this user manual in chronological order. The user manual comprises the following sections:

- Introduction
- Getting Started
- Software Interface
- Recovering MDF file password
- Full Version
- Support
- Troubleshooting
- Legal Notices

There are certain abbreviations which have been used throughout this manual. For clear understanding of the contents of this user manual, please go through the list of abbreviations, mentioned below, before reading the manual.

1.1.1 List of Abbreviations

MDF: Master Data File

SQL: Structured Query Language

RAM: Random Access Memory

MB: Mega-Byte

GB: Giga-Byte

1.2 About Kernel SQL Password Recovery

Kernel SQL Password Recovery is powerful and effective software for SQL Server users. It effectively restores the password and allows you to access your password protected SQL databases mdf files.

MDF files are protected with highly encrypted passwords that cannot be easily decrypted. Due to strong encryption, software generates the alternate password instead of the actual password. The alternate password is a working password to unprotect the SQL databases mdf files.

Kernel SQL Password Recovery is capable to recover alternate password regardless the length and complexity of the password.

1.3 Salient Features

Salient features of Kernel SQL Password Recovery include:

- Efficient embedded repair algorithms to quickly recover lost or forgotten passwords
- Interactive and attractive graphical user interface
- Supports recovery of password from SQL Server 2000
- Availability of free evaluation version to test the software efficiency and capability before purchasing it
- Instant password recovery
- Supports to multilingual password recovery
- Easily copies the recovered password to the clipboard
- No technical skills required

1.4 Who Should Use this Software?

The potential of Kernel SQL Password Recovery to recover working password regardless the length and complexity of the password makes it the best choice for database administrators. It is useful tool for both the administrators and users working with an organization where single SQL database is assigned to many users and every single user is assigned with a password.

The assigned password can be lost or forgotten by the user or administrator. With the help of Kernel SQL Password Recovery, password can be easily retrieved and copied to the clipboard.

2. Getting Started

Now that you have understood the features and potential of Kernel SQL Password Recovery, you are ready to get hands on experience of the software. To start recovering passwords of mdf files, you will first need to download and install this software.

It is strongly recommended that before installing Kernel SQL Password Recovery, you should go through the installation pre-requisites for the software to ensure that your computer is appropriately configured to run the software.

2.1 Installation Pre-requisites

The various pre-requisites for installing and running Kernel SQL Password Recovery can be broadly classified into two major categories – Hardware requirements and Software requirements.

2.1.1 Hardware Requirements:

The hardware requirements for installing the software are as follows:

- Pentium Class Processor
- Minimum 64MB RAM (128 MB recommended)
- 10MB for Software installation

2.1.2 Software Requirements:

The software requirements for installing the software can further be grouped into two categories – Operating system requirements and SQL Server version requirements.

The requirements are as follows:

2.1.2.1 Operating System Requirements

Supported Operating Systems:

- Windows Vista
- Windows XP
- Windows 2003
- Windows 2000

2.1.2.2 SQL Server Version Requirements

Supported SQL Server versions


- SQL Server 2000

2.2 Downloading Kernel SQL Password Recovery for the First Time

After checking your computer with the prescribed system requirements for Kernel SQL Password Recovery, you can download and install the software on your computer. You can buy the full version of the software from any one of our authorized resellers– Element5, Asknet and 2CO.

If you want to try using Kernel SQL Password Recovery before buying it, you can download the evaluation version from the following link:

<http://www.nucleustechologies.com/download-sql-server-password-recovery.php>

 You can recover first two actual characters of the password by using the evaluation version of Kernel SQL Password Recovery; however, the recovered password will display the characters '****' instead of the real characters until you purchase the full version of the software.

2.3 Install Kernel SQL Password Recovery

After downloading the installer file for Kernel SQL Password Recovery, you can install the software by running the file.

To install Kernel SQL Password Recovery:

1. Double-click the Kernel SQL Password Recovery installer. Follow the on-screen instructions. The **Setup Installation Complete** screen will be displayed.
2. Click **Finish** to launch the software.

2.4 Start Kernel SQL Password Recovery

To start Kernel SQL Password Recovery

Click the **Start → All Programs → Kernel SQL Password Recovery**

Alternatively, you can launch Kernel SQL Password Recovery by double-clicking the shortcut icon available on the Desktop and Quick Launch icon.


2.5 Uninstall Kernel SQL Password Recovery

You may need to uninstall and re-install Kernel SQL Password Recovery. To uninstall Kernel SQL Password Recovery:

1. Click the **Start → All Programs → Kernel SQL Password Recovery → Uninstall Kernel SQL Password Recovery**

A warning message will be displayed.

2. Click **Yes** to uninstall Kernel SQL Password Recovery.

 Before proceeding to uninstall Kernel SQL Password Recovery, you must ensure that the software is not running.

You can alternatively uninstall Kernel SQL Password Recovery from the **Control Panel** by performing the following steps:

1. Click the **Start Menu → Control Panel** and then double click the **Add or Remove Programs** icon.
2. Select **Kernel SQL Password Recovery** and click **Remove**.

A warning message will be displayed.



3. Click **Yes** to uninstall Kernel SQL Password Recovery.

3. Software Interface

Now that Kernel SQL Password Recovery has been installed on your computer system, you can start performing the password recovery with Kernel SQL Password Recovery after getting acquainted with the software interface.




3.1 Tool Bar

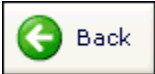
Following is the tool bar options of Kernel SQL Password Recovery software. With the help of tool bar, certain actions are performed that can also be performed with the help of buttons provided in the Graphical Interface of Kernel SQL Password Recovery. Read the information in the table below to find out about the tool-bar buttons:

Button	Button Name	Button Description
	Help	Select to view help file(s) of the software
	About	Select to view the version and other information related to the software

3.2 Buttons Used

Apart from options available in the tool bar, more buttons are displayed on other windows:

	Click to search the existing mdf files
	Click to select the mdf file for password recovery
	Click to recover the password of the selected mdf file

	Click to go back to the previous screen
Copy To ClipBoard	Click to copy the recovered password to the clipboard

4. Recovering MDF File Password

Now that you have complete familiarity of the user interface of Kernel SQL Password Recovery, you are ready to recover passwords of SQL Server databases mdf files. To recover passwords:

1. Launch Kernel SQL Password Recovery.

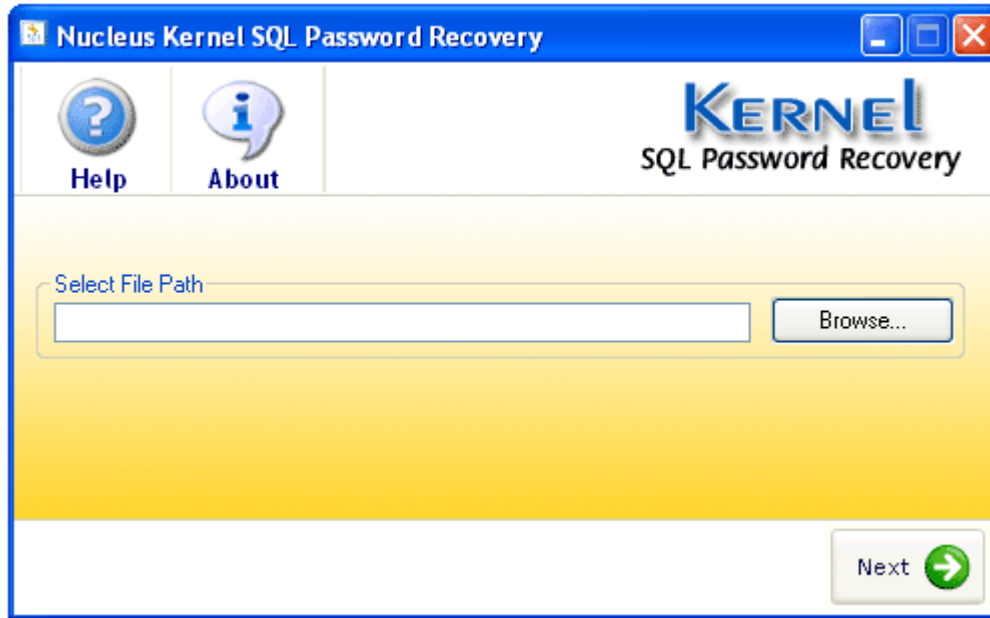


Figure 4.1: Main Window

2. Click the **Browse** button to locate the mdf file

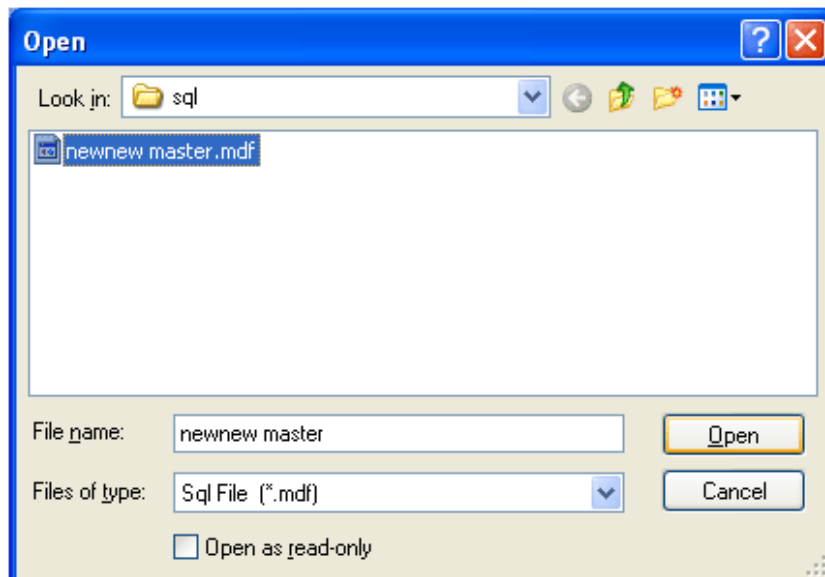


Figure 4.2: Open window

3. Select the appropriate file for which you want to recover the password and click the **Recover** button.

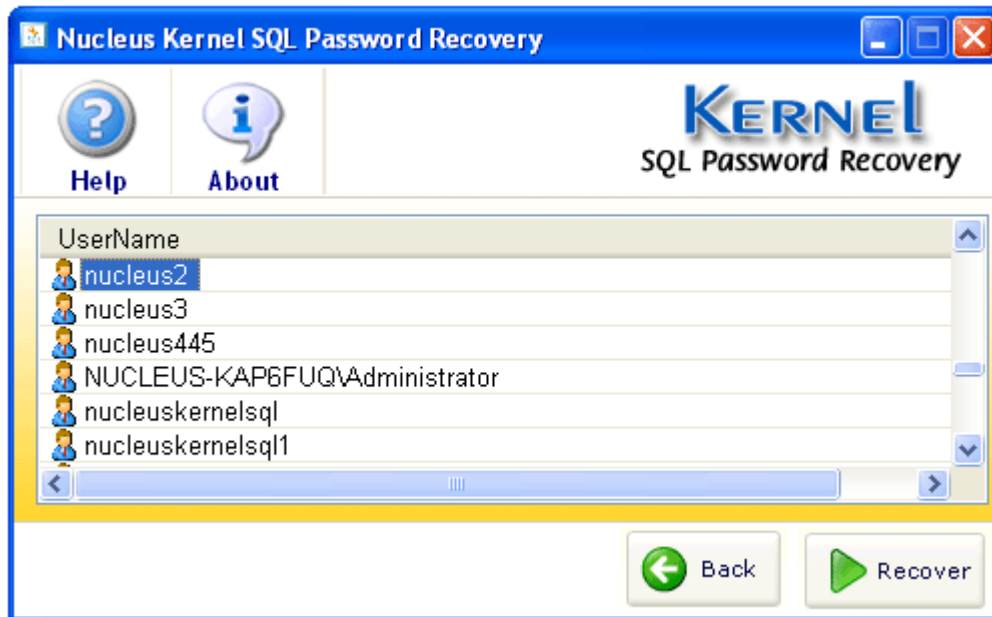


Figure 4.3: List of all MDF files

4. Click the **Copy To Clipboard** button to copy the password to the clipboard.

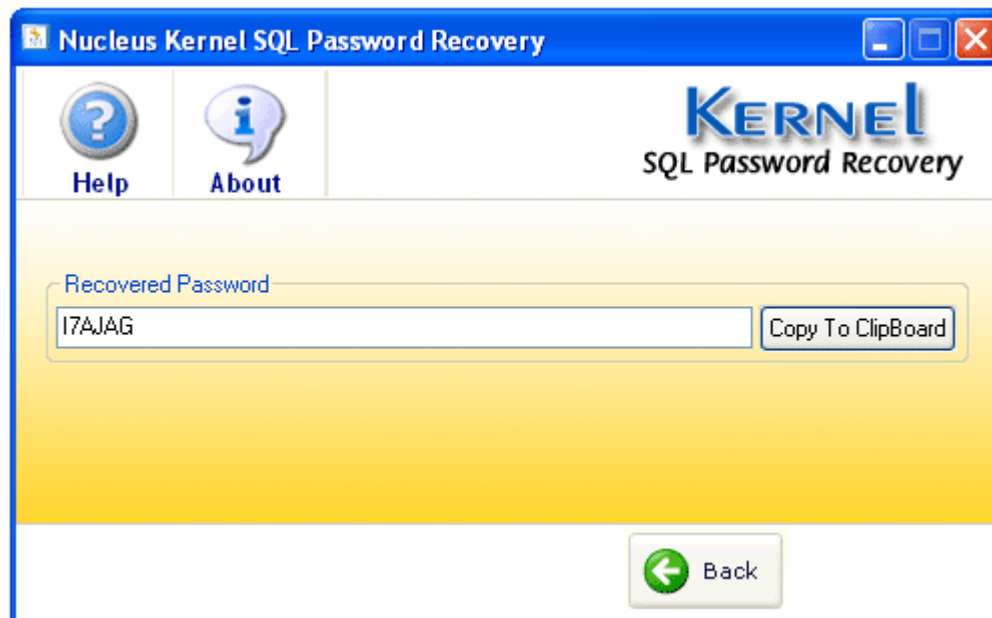


Figure 4.4: Password Recovered

5. Full Version

Although you can use Kernel SQL Password Recovery evaluation version for free and experience the capabilities of the software, there is some limitation in the evaluation version of the software.

5.1 Requirement of Full Version

By using the evaluation version of Kernel SQL Password Recovery, you can recover password; however, you cannot view the original characters of the complete password. The character '****' will be displayed instead of the actual characters of the password, software will display first two original characters of the password in the evaluation version.

You will need to buy the full version of the software to view the original characters of the password.

5.2 Purchasing Full Version

You can buy the full version of Kernel SQL Password Recovery from any one of our authorized resellers – Element5, Asknet and 2CO.

As soon the purchase transaction with our resellers gets completed, our sales team will send you an email comprising the URL to download the full version of Kernel SQL Password Recovery and activation details of the software.

6. Support

We have an extensive and efficient support system in place to assist our customers with all issues related to using Kernel SQL Password Recovery. The software comes with an embedded help manual that can be accessed by clicking **Help→Software Help** in the menu-bar. You can also press the F1 key on the keyboard of your computer to access the embedded help of Kernel SQL Password Recovery.

You can access the online help for Kernel SQL Password Recovery at <http://www.nucleustechnologies.com/Online-Helps.html>

View Animated Working demo of the software at <http://www.nucleustechnologies.com/sqlserverpassword/animatedsqlpasswordrecovery.html>

We also have live support wherein you can chat with our software experts at <http://www.nucleustechnologies.com/Support.html>

To talk on phone with our software experts call:

Help line:

+91-9818725861

1-866-348-7872 (Toll Free for USA/CANADA)

You can also email us about your queries at;

sales@nucleustechnologies.com for Sales

support@nucleustechnologies.com for Support

contact@nucleustechnologies.com for General Queries

7. Troubleshooting

This section deals with your generic and specific queries pertaining to using Kernel SQL Password Recovery.

7.1 Common Issues

Why does Kernel SQL Password Recovery have limitations in evaluation copy?

The free evaluation version of Kernel SQL Password Recovery is intended to enable you to experience the capabilities of the software. You will need to buy the software to view the characters hides behind the '*****'

7.2 Frequently Asked Questions

How to Buy Kernel SQL Password Recovery?

You can buy Kernel SQL Password Recovery online at <http://www.nucleustechnologies.com/buy-mdf-password-recovery.php>

I have lost my full version for Kernel SQL Password Recovery. Can you help me?

Please email us at sales@nucleustechnologies.com. Please include your name, address, email address, and order confirmation number (if you have it). We will be happy to help you.

8. Legal Notices

This section comprises the legal specification about Kernel SQL Password Recovery and the company NUCLEUS DATA RECOVERY.COM PRIVATE LIMITED

8.1 Copyright

NUCLEUS DATA RECOVERY.COM PRIVATE LIMITED, Nucleus Kernel accompanied user manual and documentation are copyright of NUCLEUS DATA RECOVERY.COM PRIVATE LIMITED, with all rights reserved. Under the copyright laws, this user manual cannot be reproduced in any form without the prior written permission of NUCLEUS DATA RECOVERY.COM PRIVATE LIMITED. No Patent Liability is assumed, however, with respect to the use of the information contained herein.

© NUCLEUS DATA RECOVERY.COM PRIVATE LIMITED. All rights reserved.

8.2 Trademark

Nucleus Kernel ® is a copyright work of NUCLEUS DATA RECOVERY.COM PRIVATE LIMITED

Windows 95®, Windows 98®, Windows ME®, Windows NT®, Windows 2000 Server®, Windows 2000 Advanced Server®, Windows 2003 Server®, Windows XP®, Windows Vista, and MS-DOS are registered trademarks of Microsoft Corporation.

All other brand and product names are trademarks or registered trademarks of their respective companies.

8.3 Disclaimer

The Information contained in this manual, including but not limited to any product specifications, is subject to change without notice. NUCLEUS DATA RECOVERY.COM PRIVATE LIMITED provides no warranty with regard to this manual or any other information contained herein and here by expressly disclaims any implied warranties of merchantability or fitness for any particular purpose with regard to any of the foregoing NUCLEUS DATA RECOVERY.COM PRIVATE LIMITED assumes no liability for any damages incurred directly or indirectly from any technical or typographical errors or omissions contained herein or for discrepancies between the product and the manual. In no event shall NUCLEUS DATA RECOVERY.COM PRIVATE LIMITED, be liable for any incidental, consequential special, or exemplary damages, whether based on tort, contract or otherwise, arising out of or in connection with this manual or any other information contained herein or the use there of.

8.4 License Agreement

Kernel SQL Password Recovery Copyright © by NUCLEUS DATA RECOVERY.COM PRIVATE LIMITED

Your Agreement to this License

You should carefully read the following terms and conditions before using, installing or distributing this software, unless you have a different license agreement signed by NUCLEUS DATA RECOVERY.COM PRIVATE LIMITED. The terms and conditions of this License describe the permitted use and users of each Licensed Copy of Kernel SQL Password Recovery. For purposes of this License, if you have a valid license, you have the right to use a single Licensed Copy of Nucleus Kernel.

Scope of License

Each Licensed Copy of Kernel SQL Password Recovery may either be used by a single person or used non-simultaneously by multiple people who use the software personally installed on a single workstation. All rights of any kind in Nucleus Kernel, which are not expressly granted in this License, are entirely and exclusively reserved to and by NUCLEUS DATA RECOVERY.COM PRIVATE LIMITED. You may not rent, lease, modify, translate, reverse engineer, decompile, disassemble, or create derivative works based on, Nucleus Kernel, nor permit anyone else to do so. You may not make access to Nucleus Kernel available to others in connection with a service bureau, application service provider, or similar business, nor permit anyone else to do so.

Warranty Disclaimers and Liability Limitations

Kernel SQL Password Recovery, and any and all accompanying software, files, data and materials, are distributed and provided AS IS and with no warranties of any kind, whether expressed or implied. In particular, there is no warranty for the quality of data recovered. You acknowledge that good data processing procedure dictates that any program, including Nucleus Kernel, must be thoroughly tested with non-critical data before there is any reliance on it, and you hereby assume the entire risk of all use of the copies of Nucleus Kernel covered by this License. This disclaimer of warranty constitutes an essential part of this License. In addition, in no event does NUCLEUS DATA RECOVERY.COM PRIVATE LIMITED authorize you or anyone else to use Kernel SQL Password Recovery in applications or systems where Kernel SQL Password Recovery failure to perform can reasonably be expected to result in a significant physical injury, or in loss of life. Any such use is entirely at your own risk, and you agree to hold NUCLEUS DATA RECOVERY.COM PRIVATE LIMITED harmless from any and all claims or losses relating to such unauthorized use.

General

This License is the complete statement of the agreement between the parties on the subject matter, and merges and supersedes all other or prior understandings, purchase orders, agreements and arrangements. This License shall be governed by the laws of the State of Delhi. Exclusive jurisdiction and venue for all matters relating to this License shall be in courts and for a located in the State of Delhi, and you consent to such jurisdiction and venue. There are no third party beneficiaries of any promises, obligations or representations made by NUCLEUS DATA RECOVERY.COM PRIVATE LIMITED herein.

Any waiver by NUCLEUS DATA RECOVERY.COM PRIVATE LIMITED of any violation of this License by you shall not constitute, nor contribute to, a waiver by NUCLEUS DATA RECOVERY.COM PRIVATE LIMITED of any other or future violation of the same provision, or any other provision, of this License.